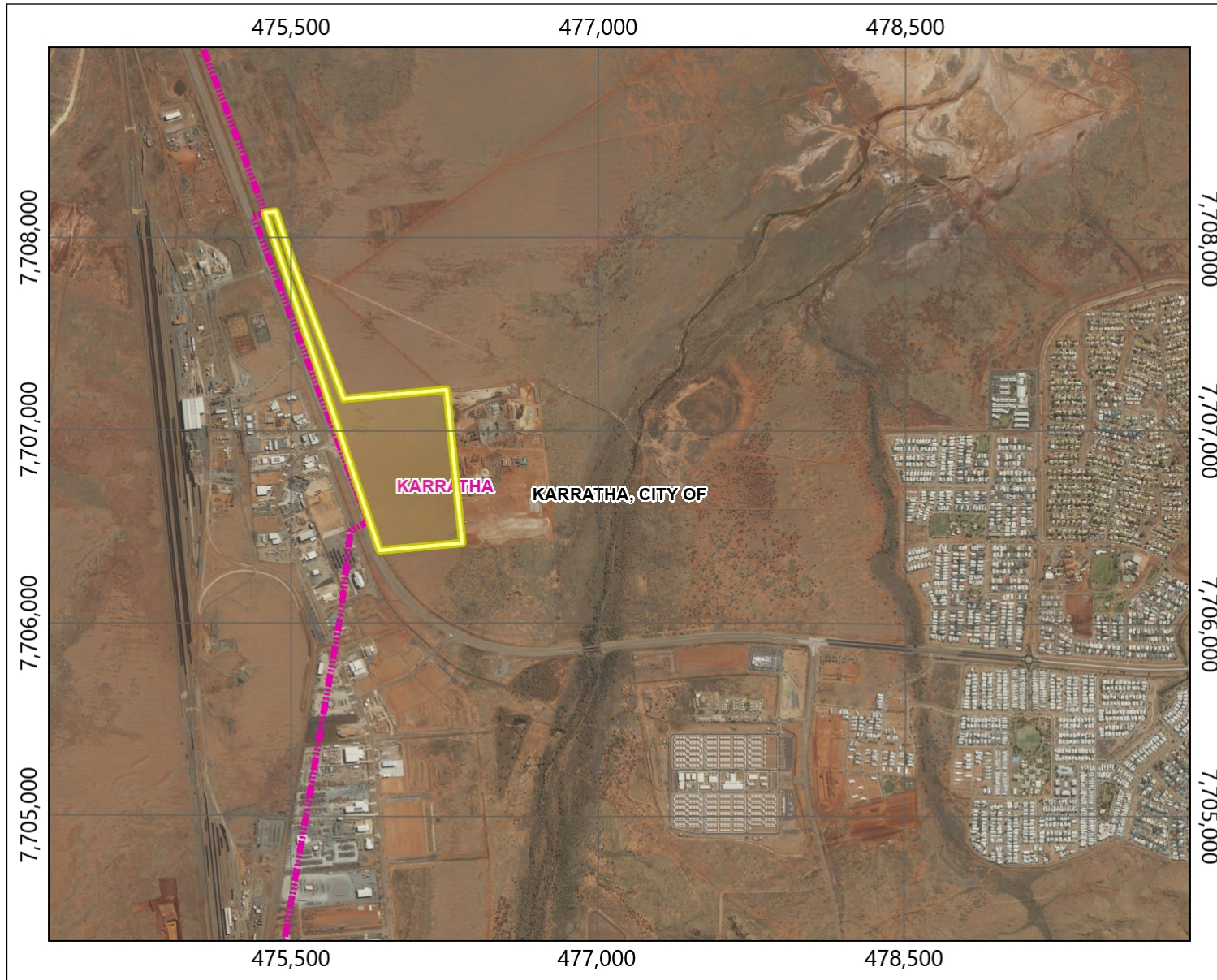




## Mining Tenement | G 47/1274



### Legend

- Local Government Authorities
- Townsite Boundaries

The data presented herein is interpreted and made available in good faith. It is derived from sources believed to be reliable and accurate at the time of release. Do not solely rely on this information when making a commercial decision. Sheet size: A4  
Recommended reference for this map is: Geological Survey of Western Australia 2026, Mining Tenement | G 47/1274 extracted from GeoVIEW on 11/06/2026 09:19 AM Perth, Western Australia: Department of Mines, Petroleum and Exploration.

NOTE: Scale is calculated at the centre of the map. Scale representative fraction will vary in a North South direction.  
MAPID: 11062026-09191783

Scale 1 : 30,000

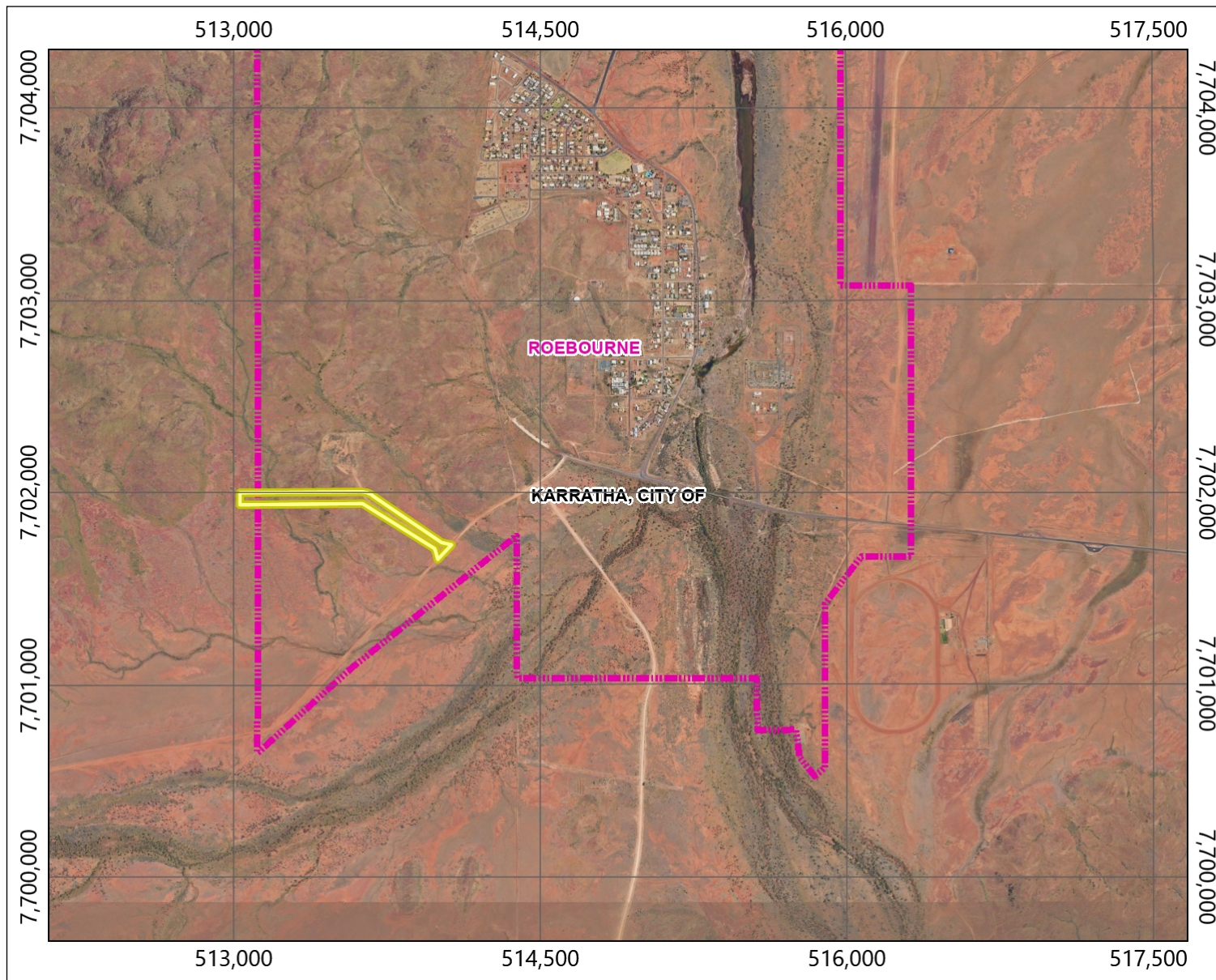
1 Kilometers  
GDA2020

[Click to open GeoView](#)



\* If the required symbology is not available in the legend, please refer to the Extended Legend Printing Template.

## Mining Tenement | L 47/1153



### Legend

- Local Government Authorities
- Townsite Boundaries

The data presented herein is interpreted and made available in good faith. It is derived from sources believed to be reliable and accurate at the time of release. Do not solely rely on this information when making a commercial decision. Sheet size: A4  
 Recommended reference for this map is: Geological Survey of Western Australia 2026, Mining Tenement | L 47/1153 extracted from GeoVIEW on 11/06/2026 09:31 AM Perth, Western Australia: Department of Mines, Petroleum and Exploration.

NOTE: Scale is calculated at the centre of the map. Scale representative fraction will vary in a North South direction.  
 MAPID: 11062026-09310066

Scale 1 : 30,000

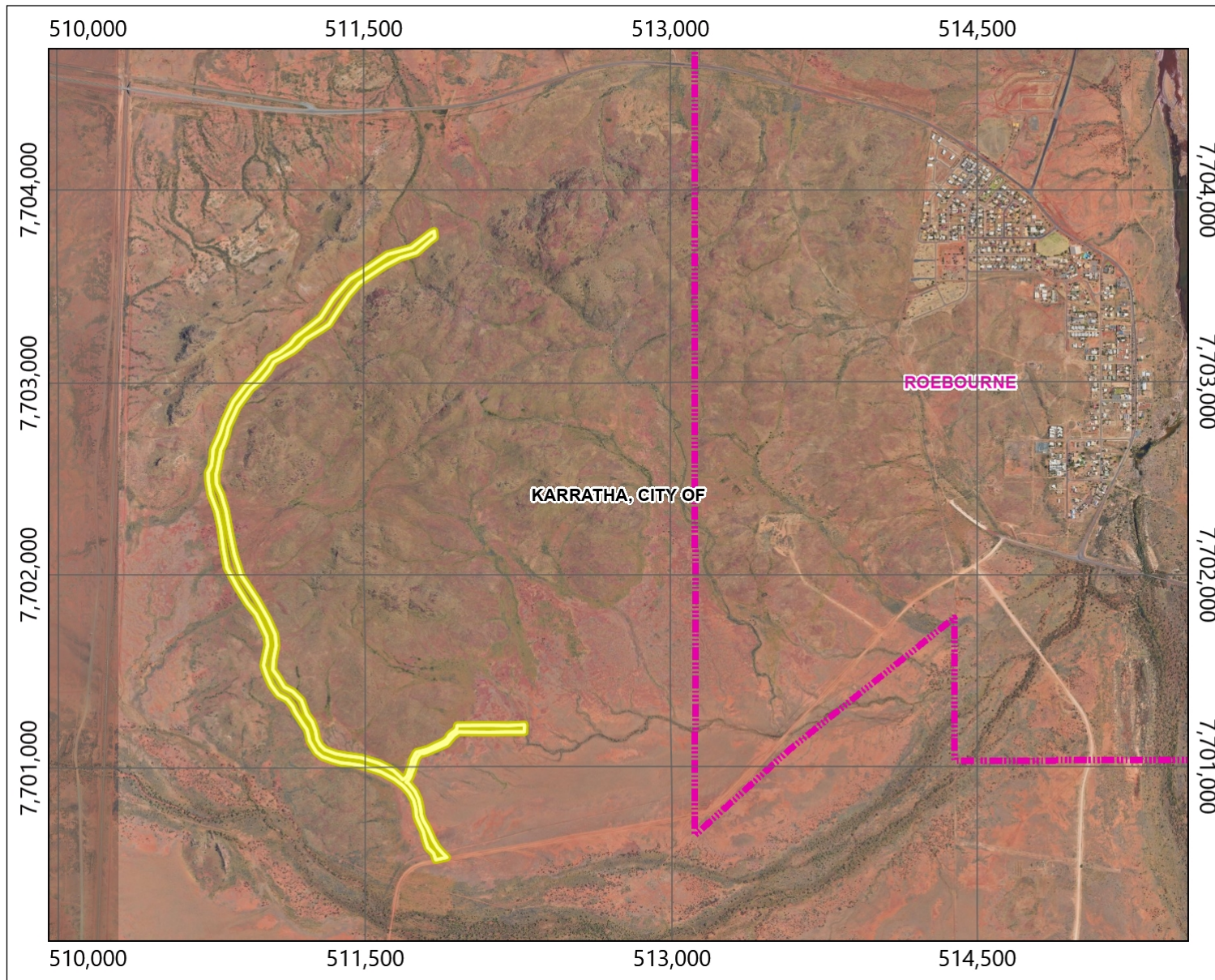
1 Kilometers  
 GDA2020

[Click to open GeoView](#)





\* If the required symbology is not available in the legend, please refer to the Extended Legend Printing Template.

# Mining Tenement | L 47/1154




## Legend

-  Local Government Authorities
-  Townsite Boundaries

The data presented herein is interpreted and made available in good faith. It is derived from sources believed to be reliable and accurate at the time of release. Do not solely rely on this information when making a commercial decision. Sheet size: A4  
 Recommended reference for this map is: Geological Survey of Western Australia 2026, Mining Tenement | L 47/1154 extracted from GeoVIEW on 11/06/2026 09:32 AM Perth, Western Australia: Department of Mines, Petroleum and Exploration.

NOTE: Scale is calculated at the centre of the map. Scale representative fraction will vary in a North South direction.  
 MAPID: 11062026-09324863

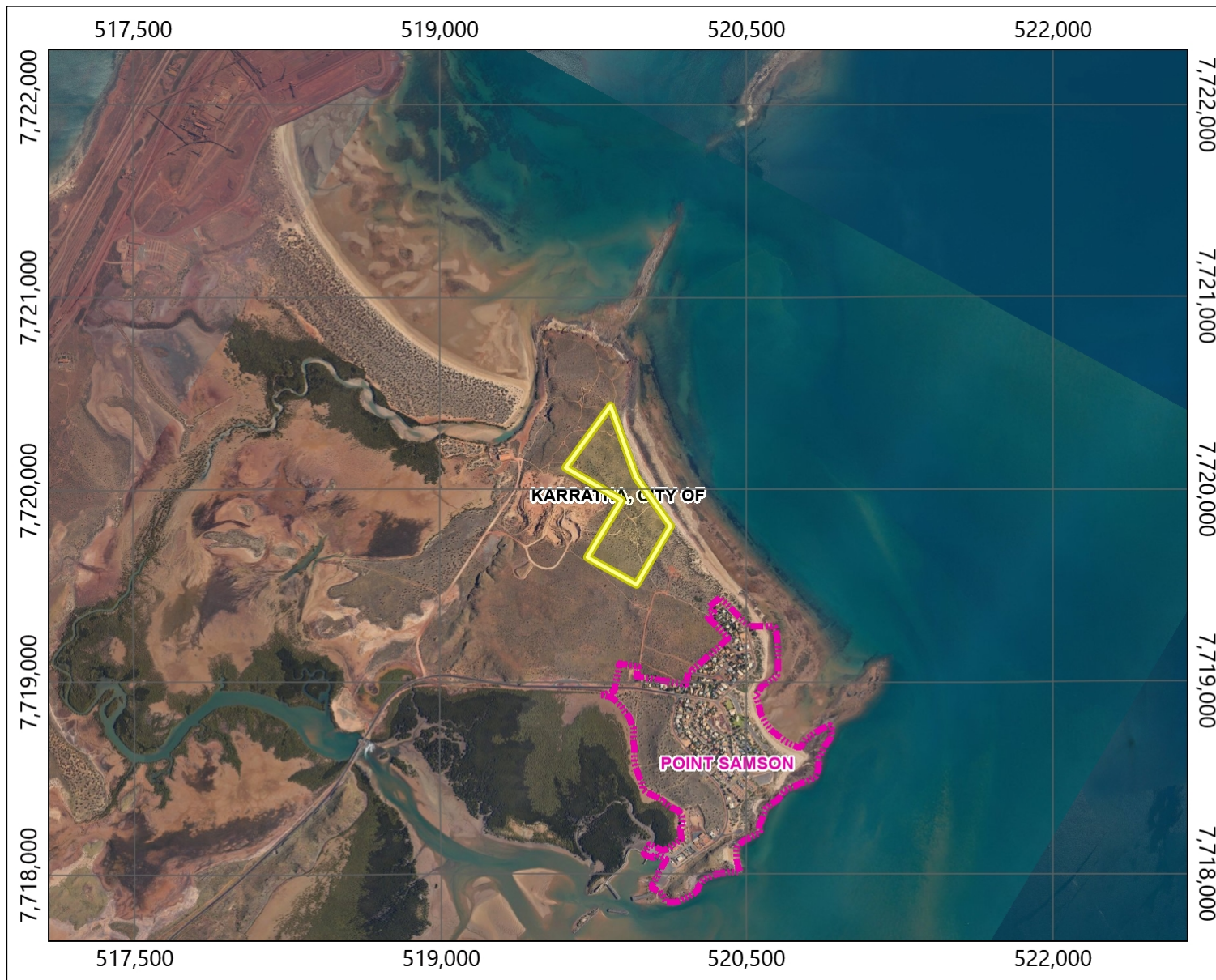
Scale 1 : 30,000  
  
 1 Kilometers  
 GDA2020

[Click to open GeoView](#)



\* If the required symbology is not available in the legend, please refer to the Extended Legend Printing Template.

## Mining Tenement | M 47/1667



### Legend

- Local Government Authorities
- Townsite Boundaries

The data presented herein is interpreted and made available in good faith. It is derived from sources believed to be reliable and accurate at the time of release. Do not solely rely on this information when making a commercial decision. Sheet size: A4  
 Recommended reference for this map is: Geological Survey of Western Australia 2026, Mining Tenement | M 47/1667 extracted from GeoVIEW on 11/06/2026 09:34 AM Perth, Western Australia: Department of Mines, Petroleum and Exploration.

NOTE: Scale is calculated at the centre of the map. Scale representative fraction will vary in a North South direction.

MAPID: 11062026-09345232

Scale 1 : 30,000



1 Kilometers

GDA2020

[Click to open GeoView](#)



\* If the required symbology is not available in the legend, please refer to the Extended Legend Printing Template.